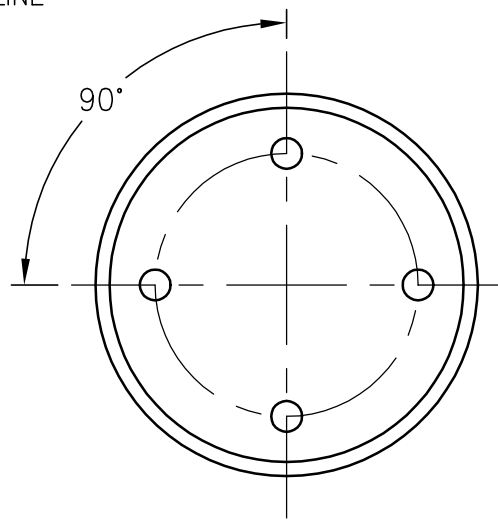
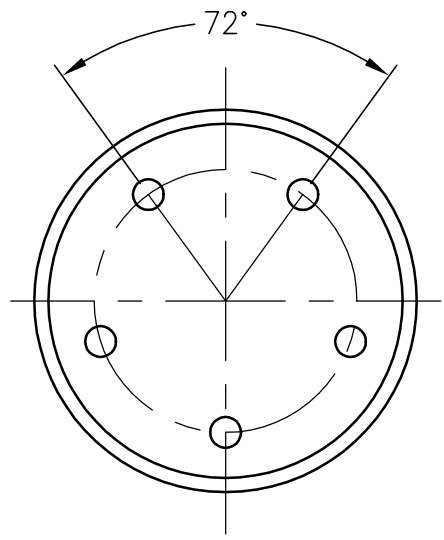


LC2 & LC3 PROBE HEAD HOLE LAYOUT

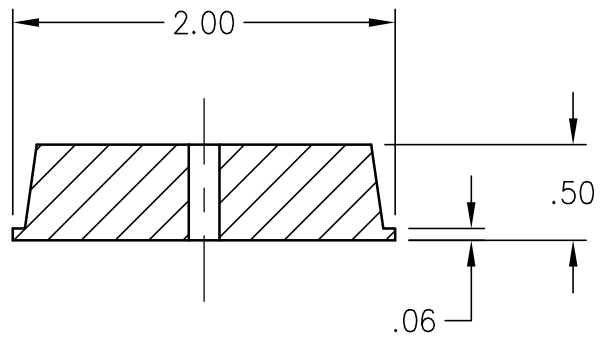


LC4 PROBE HEAD HOLE LAYOUT



LC5 PROBE HEAD HOLE LAYOUT

MODEL	PCN No.	MATERIAL
LC2	4392	GREY POLYFLAM RPP 1174
LC2	4392R	RED POLYFLAM RPP 1174
LC3	4393	GREY POLYFLAM RPP 1174
LC3	4393R	RED POLYFLAM RPP 1174
LC4	1859	GREY POLYFLAM RPP 1174
LC4	1859R	RED POLYFLAM RPP 1174
LC5	1860	GREY POLYFLAM RPP 1174
LC5	1860R	RED POLYFLAM RPP 1174



REV.	BY	DATE	DESCRIPTION OF CHANGE
0	NRS	04/01/04	RELEASED, REPLACES H1-1166

PCN:	SEE CHART
CUSTOMER No:	
MATERIAL:	POLYFLAM

UNLESS NOTED TOLERANCES ARE:  
 0.00 = ±.XX  
 0.000 = ±.XXX  
 ANGLES = ±1°

INCHES (mm)

3rd ANGLE PROJECTION

**PROCESS TECHNOLOGY**  
**LUFRA<sup>®</sup>**

7010 LINDSAY DR, MENTOR OH USA  
 (P) 440-946-9500 (F) 440-974-9561  
 WWW.PROCESS-TECHNOLOGY.COM

DRAWN BY: NRS	DATE: 04/01/04	DESIGNER:	DATE:
DESCRIPTION INSERT, LC PROBE HEAD, HOLE LAYOUTS			
APPROVED BY:	SCALE: 1:1	DRAWING No. 1 OF 1 <b>37-0036-0</b>	